

Technical Newsletter

#tnl2016-0011e # 1 / 5



Information about the functions added to DAD3220/DAD3230/DAD3350/DAD3430

Applicable machine

Series name	Applicable machine
3000 series	Any of the following models with software version 1.4B or 1.4C installed: DAD3220 DAD3230 DAD3350 DAD3430

Information

New functions below have been added to the above applicable machines. Instruction manuals will be revised in order. This Technical Newsletter informs the contents of the functions.

No.	Function	Contents	Pages to be referred
1	Display of Resource Information	This is the function to display the PC's hard disk and memory usage amounts.	2 to 3
2	Motor Driver Maintenance	This is the function to write and extract the parameters of motor driver.	4 to 5

Inquiries

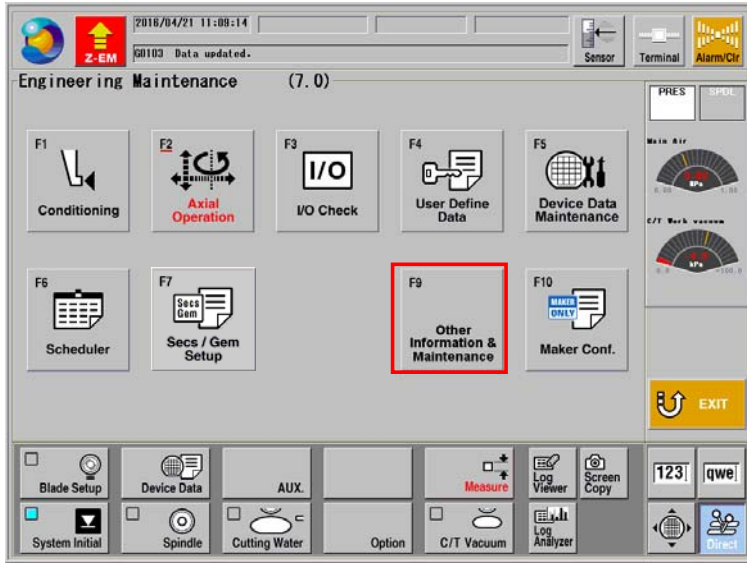
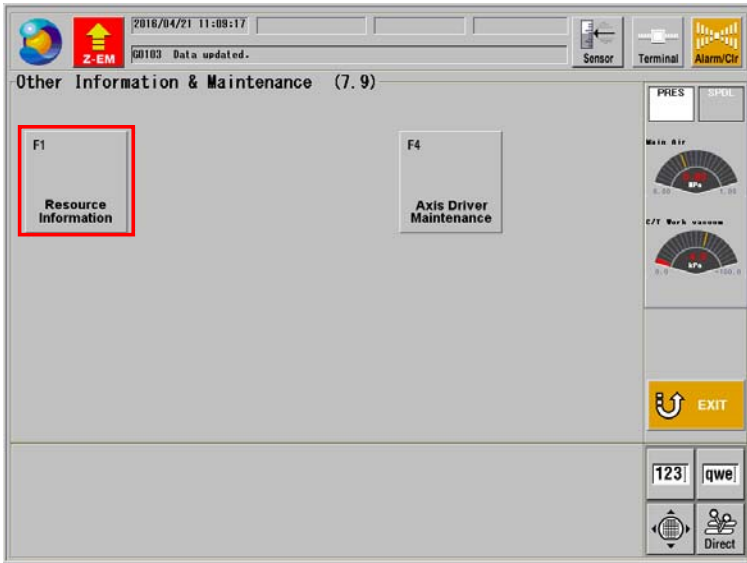
For more information about this matter, please contact your DISCO sales representative or customer engineer.

1. Display of Resource Information

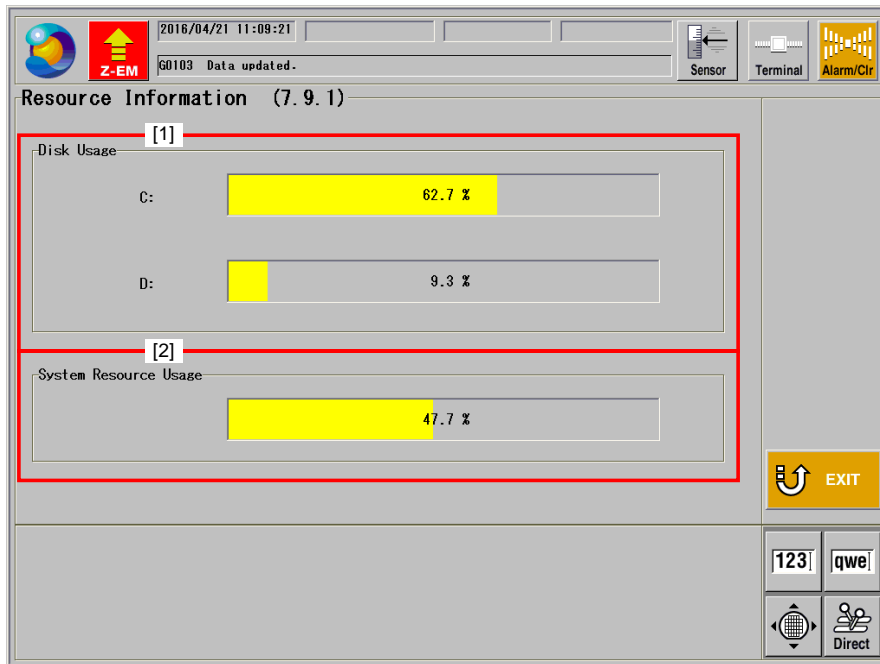
Function outline

The usage amounts of the hard disk of the PC inside the machine and its memory are displayed on the RESOURCE INFORMATION screen [7.9.1].

Procedures for calling up the RESOURCE INFORMATION screen [7.9.1]

Step No.	Procedure
1	<p>Press the <F7> button on the MAIN MENU screen [0.0].</p> <ul style="list-style-type: none"> The ENGINEERING MAINTENANCE screen [7.0] opens. 
2	<p>Press the <F9> button on the ENGINEERING MAINTENANCE screen [7.0].</p> <ul style="list-style-type: none"> The OTHER INFORMATION & MAINTENANCE screen [7.9] opens. 
3	<p>Press the <F1> button on the OTHER INFORMATION & MAINTENANCE screen [7.9].</p> <ul style="list-style-type: none"> The RESOURCE INFORMATION screen [7.9.1] opens.

RESOURCE INFORMATION screen [7.9.1]



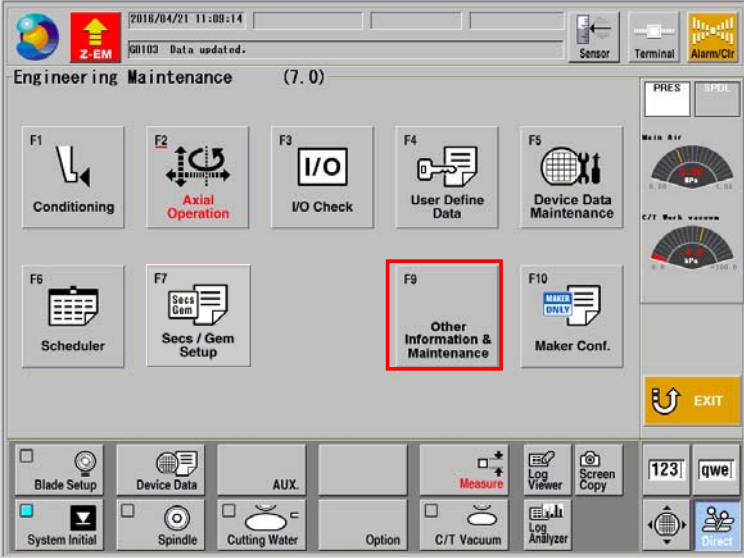
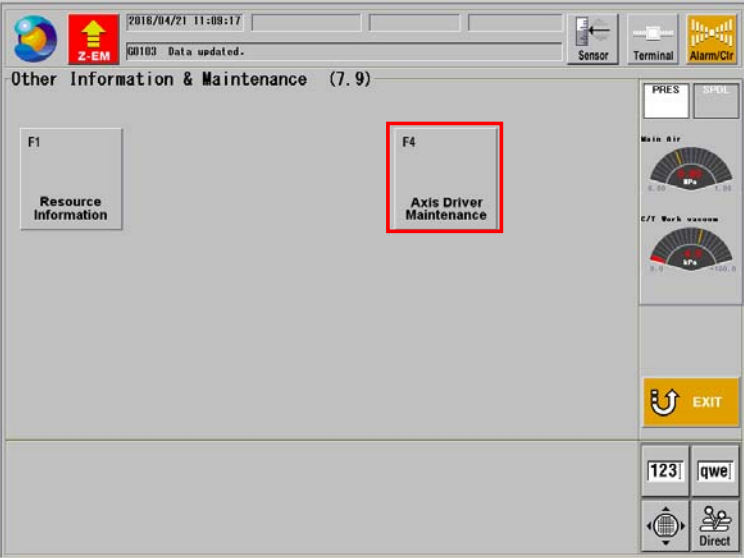
Item No.	Description
[1]	Displays the usage amount of the PC's hard disk.
[2]	Displays the usage amount of the PC's memory.

2. Motor Driver Maintenance

Function outline

This is the function for writing and extracting parameters of the motor driver.

Procedures for calling up the AXIS DRIVER MAINTENANCE screen [7.9.4]

Step No.	Procedure
1	<p>Press the <F7> button on the MAIN MENU screen [0.0].</p> <ul style="list-style-type: none"> The ENGINEERING MAINTENANCE screen [7.0] opens. 
2	<p>Press the <F9> button on the ENGINEERING MAINTENANCE screen [7.0].</p> <ul style="list-style-type: none"> The OTHER INFORMATION & MAINTENANCE screen [7.9] opens. 
3	<p>Press the <F4> button on the OTHER INFORMATION & MAINTENANCE screen [7.9].</p> <ul style="list-style-type: none"> The AXIS DRIVER MAINTENANCE screen [7.9.4] opens.

AXIS DRIVER MAINTENANCE screen [7.9.4]

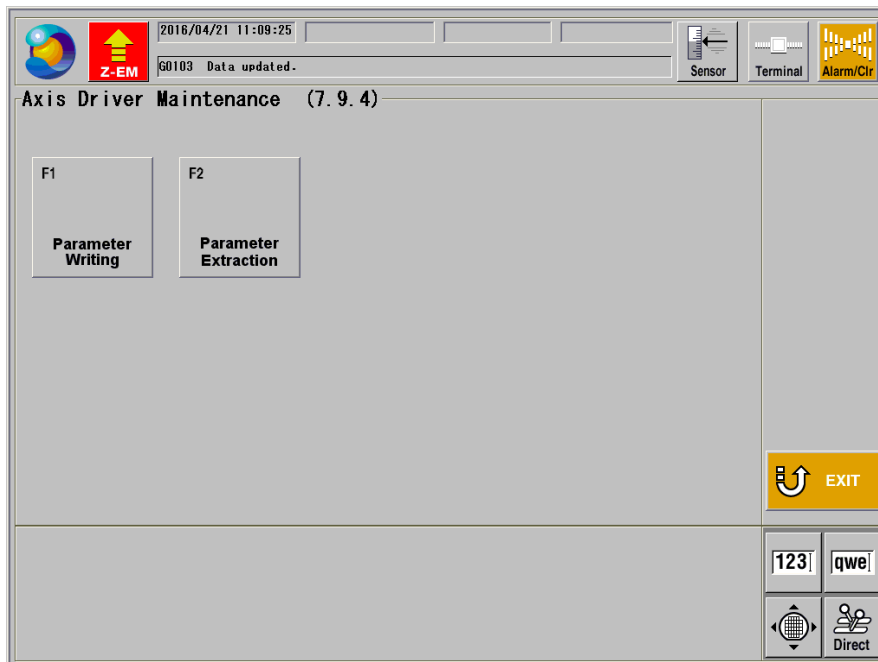
This is the screen to write and extract parameters of the motor driver.

This screen is called up by pressing the <F4> button on the OTHER INFORMATION & MAINTENANCE screen [7.9].



If there is a need to write or extract parameters of the motor driver, be sure to follow the instructions of your DISCO customer engineer

If performing operation without following their instructions, the machine may get damaged or broken, or the operator may get injured due to malfunction.



Press	To
F1	Write parameters onto the motor driver.
F2	Extract parameters from the motor driver.